

Headteacher's Newsletter



May 2022 | Issue 2

Dear Parents/Carers,

This is the last day of what has been a short but fast paced half term with lots of fun filled learning taking place.

Thank you to all our Whitehall family for asking how Mrs Bringan has been over the last few weeks. I am in regular contact and have passed on your condolences and thoughts at this difficult time. She has expressed her gratitude and thanks to all.

Remember we are back on **Monday 6th June 2022**. Have a safe and restful half term break.

Mrs Kennedy
Deputy Headteacher



The Queen's Platinum Jubilee Celebrations

As part of both the Early Years curriculum and as part of the Key Stage One curriculum, children learn about significant events both past and present. The Queen's Jubilee is a significant event and one that is unlikely to happen again in our lifetimes. I wonder how many of you



can remember where you were for the Queen's silver or golden jubilee?

The children have learnt about British Values such as democracy and our school council have met to discuss matters arising in

school.

The children have been making bunting, flags and crowns as well as learning to sing the National Anthem. We ended the week by having a 'Red, White and Blue' themed day which included a street party to celebrate this momentous occasion. Pictures will follow in our next newsletter.

Reminders

Last day of this half term —Thursday
26th May 2022

Friday 27th May 2022 - School closed

Mon 30th May— Friday 3rd June
2022 May Half Term

Importance of Punctuality

We have several children who are regularly arriving late to school. Please make sure that you leave for school in plenty of time to arrive before the gates close. Please see the table below for a reminder of times:

If you arrive after this time your child is late. Persistent absence and lateness are referred to the participation team at the local authority.

Year group/ Class	Gates open	Gates close
Nursery am	8:30	8:45
Nursery pm	12:30	12:45
Reception	8:30	8:50
Year 1	8:40	8:55
Year 2	8:45	8:55

Recent Communication

- Reminders about end of term
- Nursery Acceptance Letters
- New to Reception Meeting letters
- Vaccination information for 5-11 year olds
- Dental Screening Survey
- Safeguarding newsletter
- New to Nursery Meeting letters

Reminder - Summer Term PE Timetable

Class	PE Days
NAM	Wednesday
NPM	Wednesday
Cedar	Monday
Larch	Wednesday
Birch	Thursday
Spruce	Tuesday
Beech	Tuesday & Friday
Maple	Tuesday & Friday
Elm	Monday & Thursday
Pine	Monday & Thursday
Peacock	Tuesday & Thursday
Flamingo	Monday & Wednesday
Toucan	Tuesday & Wednesday
Kingfisher	Monday & Wednesday

Children may come to school on their

Safeguarding

If you are worried about a child or are concerned about an on-going issue involving a child please contact

Hillingdon Stronger Families Hub on 01895 556006,

or alternatively if you feel a child is in immediate danger then call **the Police emergency number 999.**

Class Arrangements for next school year

We will shortly be arranging which class the children will be in for the new school year. If you have any information that you would like us to take in to consideration, please let me know in writing by **Friday 10th June**. Please address the letter to me (Mrs Kennedy) and hand it to the main school office.

We cannot make any promises to grant requests but we can assure you that all cases will be given due consideration.

Attendance Heroes

Our attendance heroes are picked randomly each week from all the children who were at school everyday all week.

Our individual attendance heroes last week were:

Name	Class
Danyal	Cedar
Arshaan	Larch
Busayo	Pine
Zion	Elm
Kian	Toucan
Layla	Flamingo

Our class attendance winners are:

Class	Percentage
Maple	95.8%
Spruce	97.3%



Please remember not to book term time holidays.

Our attendance policy can be found here:

[Attendance policy](#)

Summer Weather reminders

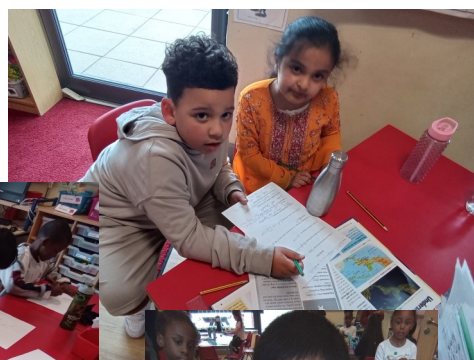


As the weather gets warmer, please remember the following:

- Please apply sun cream on your child before school
- Please ensure they bring in a sun hat and water bottle to school
- They must wear closed toe shoes with socks for health and safety reasons
- Don't forget to send them in with a raincoat just in case it rains!

One World Week

The children really enjoyed learning about different countries during One World Week and worked hard to learn dances, songs and words from their class' chosen country. Please take a look on Google Classroom to see their amazing performances!



Welcome to the team!

We would like to welcome Mrs J Robinson to our school team.

Mrs Robinson has joined our office team as School Business manager.

If you have not done so already please say hello when she is out on duty in the morning and afternoon.



Aspiration Day—16th June 2022

Do you or a family member work in a career which you think our children would like to know more about? Or perhaps you have a degree in a subject they would love to learn about? If so, we would love to have you come in to talk to the children about what you do during our Aspiration Day.

Please email the school office to express your interest. The children would love to hear about what you do!



Road Safety

Recently, there was a road traffic collision outside of both Whitehall Schools the Thankfully, this did not involve any of our Whitehall children. Where possible, we encourage all our families to use alternative methods such as walking to get to and from school.

Traffic Enforcement Officers are aware of the collision and will be even more present after the half term holidays.



School Council Update and Competition

A School Council is a place where we share ideas, listen to the views of the children across the school and make important decisions. School Council met this week to discuss a range of topics including our FRESH values, how to gather pupil voice to share back at school council meetings and what strengths and development points they thought there were for the school.

One of their suggests was that School Council should have a logo to represents them and could be shared in any future correspondence just 'like the school has a logo'.

Could you design a School Council logo for us during half term? It should include

- a picture
- the words 'Whitehall Infant School Council'.

School Council members will judge the entries, and the winning logo will be the official School Council logo! **Please hand your entry in to your class teacher by Friday 10th June.**



Nursery applications

There is still time to apply for a place in our Nursery. If you or anyone you know would like to apply, please collect an application form from the main school office.

48 Hour Rule

If your child has sickness and/or diarrhea they should rest at home for 48 hours from the last episode.



School Uniform

We are fortunate to always have families offering us donations of clean school uniform in an excellent condition. Given the rise in the cost of living and being so close to the end of the year we are urging any families who require school uniform to get in touch and we will offer support where we are able to.

Labelling Uniform

As the weather gets warmer, we find that children forget items of clothing on the playground. There are often items that can't be returned to their rightful owners as they are not labelled. Please right your child's name on clothing, water bottles, lunch boxes and book bags.

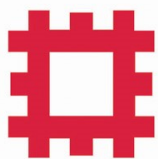


Diary Dates

These dates are subject to change. Separate information will be sent out for each event.

Friday	27th	May	<u>SCHOOL CLOSED</u>	<u>SCHOOL CLOSED</u>
Mon-Friday	30th May -	3rd June	<u>HALF TERM</u>	<u>SCHOOL CLOSED</u>
Mon	6th	June	First day back after the holidays	All children
Mon- Fri	6th - 10th	June	Phonic Screening Check	Year 1
Tues	7th	June	New to School Reception Meeting	New to school parents are invited to a meeting about the school
Wed	8th	June	Current Nursery to Reception meeting	Parents of current nursery are invited to a reception meeting about the school
Tues	14th	June	New to Nursery Meeting	Parents of children who are joining nursery in September
Thursday	16th	June	Aspiration's Day	Nursery—Year 2
Monday	20th	June	Reception trip to Odd's Farm	Reception classes
Mon-Fri	27th - 1st	Jun-Jul	Healthy Week	All year groups
Wed	29th	June	Nursery Sport's Day	
Thursday	30th	June	Reception, Year 1 and Year 2 Sport's Day	Weather permitting

Holiday Activities



ENGLISH HERITAGE

VIRTUAL EVENT: LEARN TO DRAW QUEEN VICTORIA AND PRINCE ALBERT!

JOIN WESLEY ROBINS, THE ILLUSTRATOR OF KIDS RULE! MAGAZINE, IN A FUN, DRAW-ALONG ART CLASS FOR THE WHOLE FAMILY!

In this virtual event, Wesley will show you how to draw Queen Victoria and Prince Albert. Then you'll get a chance to ask **English Heritage** historian Dr Andrew Hann your questions about this famous royal couple!

When : Wednesday 1 June 2022 at 4.00pm .

Duration 45 min.

To take part, all you need is a piece of paper, a pencil and some colouring pens or pencils.

Register for free at the following link: <https://www.bigmarker.com/immediate-media-co/Kids-Rule-Princess-Queen-Victoria-and-Prince-Albert-draw-along-art-class>

Enjoy and have fun!



During the holidays, have fun perfecting your sculpting skills by using cardboard boxes to make Art.

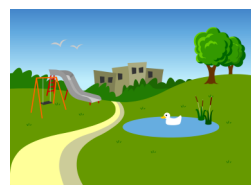
Visit **Tate Kids** to be inspired by the artist Lubaina Hlmid :

<https://www.tate.org.uk/kids/make/sculpture/make-art-using-a-cardboard-box>


Don't forget to add your pictures to Google Classroom to share what you have created.

We are so fortunate to have some wonderful parks and open spaces in Hillingdon and the surrounding areas. As the weather is improving, why not take your child to one of the many local parks for a fun, free day out! Visit one of the following links to find your nearest park:

<https://hillington.gov.uk/local-parks>



Summer Menu

<div>  <div>WEEKLY MENU</div> <div>Please note Dishes may vary due to local choice at your school (v) = vegetarian</div> </div>					
	MONDAY	TUESDAY	WEDNESDAY	THURSDAY	FRIDAY
Week 1 w/c 18 th April 09 th May 06 th June 27 th June 18 th July	Beef Bolognese and Spaghetti Jacket Potato with a Choice of Fillings Halal Chicken Pasta Bake Jelly Pot	Chicken Sausages with Mash & Gravy Quorn Sausages with Mash & Gravy Halal Chicken Sausages with Mash & Gravy Shortbread Biscuit with Sliced Fruit	Roast Boneless Chicken with Roast Potatoes & Gravy Vegetable Pinwheel with Roast Potatoes and Gravy Roast Halal Boneless Chicken with Roast Potatoes & Gravy Yorkshire puddings Ice Cream Tub/ Variety of Fruit	Lamb Lasagne with Garlic Bread Jacket Potato with Beans/ Cheese or Salmon Mayo Halal Lamb Lasagne with Garlic Bread Iced Lemon Sponge & Custard	Fish Fingers served with Chips Vegetable Spring Roll with Chips and Sweet Chilli Sauce Jacket Potato with Beans/Cheese or Tuna Mixed Fresh Fruit
Week 2 w/c 25 th April 16 th May 13 th June 04 th July	Chicken Goujons served with Baked Wedges Vegetable Burger in a Bun served with Chips and Tomato Ketchup Jacket Potato Beans/ Cheese/ Salmon Mayo Jelly Pot	Beef Burger in a Bun with Homemade Wedges Macaroni Cheese with Garlic Bread Halal Beef Burger in a Bun with Homemade Wedges Strawberry Jelly with Peaches	Roast Beef with Roast Potatoes and Gravy Quorn Roast with Roast Potatoes and Gravy Halal Roast Beef with Roast Potatoes and Gravy Yorkshire puddings Ice Cream Tub	BBQ chicken casserole served with Rice Cheese and Tomato Pasta Bake Halal BBQ chicken casserole served with Rice Chocolate Cake & Chocolate Sauce	Breaded Fish served with Chips Crispy Quorn Nuggets served with Chips and Tomato Ketchup Mixed Fresh Fruit
Week 3 w/c 02 nd May 23 rd May 20 th June 11 th July	Homemade Chicken Pizza with Baked Potato Wedges Homemade Cheese & Tomato Pizza with Baked Potato Wedges Halal Chicken Pizza with Baked Potato Wedges Jelly Pot	Lamb Shepherd's Pie Jacket Potato with Beans/Cheese or Salmon Mayo Halal Lamb Shepherd's Pie Fruit Yoghurt/ Variety of Fruit	Roast Turkey with Roast Potatoes & Gravy Vegetable Pinwheel with Roast Potatoes and Gravy Halal Roast Turkey with Roast Potatoes & Gravy Yorkshire puddings Flapjack/ Variety of Fruit	Chicken Fajita with Savoury Rice Macaroni cheese with Garlic Bread Halal Chicken Fajita with Savoury Rice Ice Cream Tub	Fish Finger Bap & Chips with Homemade Tartare Sauce Tortilla Stacks served with Chips Mixed Fresh Fruit

AVAILABLE DAILY

We also serve a choice of salads, selection of vegetables, freshly baked bread, fresh fruit platters, fruit yoghurt and water.

Central and North West London 
NHS Foundation Trust

Hillingdon Peer Support Breastfeeding Drop-in (London Borough of Hillingdon residents only)

Tuesdays 10.00 to 11.30 am

Where: Social Room, Aquavista Packet Boat Marina, Packet Boat Lane Uxbridge,

Run by: trained NHS Peer Supporters, Lizzie and Sarah

This group is open to women who are breastfeeding or anyone who is pregnant and wants to discuss breastfeeding

Drop-in for information, support or just a chat and a cup of tea

No need to book

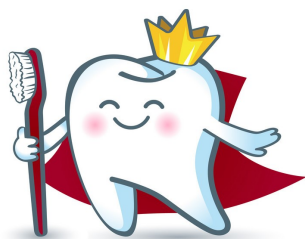
Large free car park on site



Food Vouchers

Hillingdon Council is putting residents first using government funding to help support residents most in need by providing additional financial assistance to help meet the cost of food, energy, water bills and other essentials. Some families may be entitled to food vouchers if they meet specific criteria.

Please see <https://www.hillingdon.gov.uk/household-support-grant> for more information. You will be contacted directly by the council if you are eligible.



Whittington Health
NHS Trust

Oral Health Parent/Carer Information Session

You are invited to attend a free information session to help you gain more information about taking care of your children's teeth.

The topics that will be covered are:

- Tooth brushing tips
- Toothbrush adaption for children with additional needs
- Exploring various different toothbrushes that are available
- Introducing flavour free toothpaste
- Baby bottles and dummy advice
- Making healthy food choices for teeth
- Visiting the Dentist
- And lots more useful information

You will also have the chance to ask questions and useful links will be provided.

All sessions will be held on Teams. To join a session please contact Sally McGregor – Oral Health Promoter sallymcgregor1@nhs.net and you will be sent a link to join.

- **24th May 2022 - 11.00am - 11.45am**
- **8th June 2022 - 12.30pm - 1.15pm**
- **10th June 2022 - 12.45pm - 1.15pm**