



Headteacher's Newsletter

October 2020 ISSUE 2

Whitehall Infant School is a five star school with a FRESH approach. We provide five star learning for all, with family at the heart of everything we do. We teach our children to have respect at all times. We want our children to achieve excellence, whilst being safe and happy.



Dear Parents and Carers,

This is the last newsletter of this half term. It is lovely to see how much the children are enjoying being back at school and the excellent relationships that have been formed between staff, families and children.

I would like to thank all our parents and carers for supporting us through this unprecedented time. You have enabled us to safely support your children and we can't wait to see everyone after half term.

Miss Cheshire
Acting Headteacher



Time to
Relax
it's
Half
Term

Diwali & Children in Need Day

To celebrate Diwali and Children in Need, children can come to school in traditional or spotty clothing on **Friday 13th November**. Sensible clothes and school shoes or trainers only please to ensure the children's safety,



Diwali is the Hindu and Sikh festival of light and celebrates the victory of good over evil. We will be learning about Diwali in school.



Children in Need is a charity whose mission is to help ensure every child in the UK is safe, happy, secure and has the opportunities they need to reach their potential. This is such an important cause. We would love for our Whitehall community to show their support for this charity by making a donation to the justgiving page that we have set up:

<https://www.justgiving.com/fundraising/whitehall-infant-school1>

Remember that the clocks go back by 1 hour on Sunday 25th October.



Reminder

Half Term	Monday 26th October - Friday 30th October
Back to school	Monday 2nd November

Please ensure that no holidays are booked during term time.

If you are planning to travel abroad in half term, please ensure you are aware of quarantine requirements in place and that these are subject to change. Please visit <https://www.gov.uk/guidance/coronavirus-covid-19-travel-corridors> for up to date information.

Reminders of our current procedures

- Due to the rising number of Covid-19 cases, we are now asking all **adults entering the school grounds to wear a face mask or covering**, unless exempt from wearing one. We hope you will support us with this to keep all parents, children and staff as safe as possible.
- Please remember, to support the safety of our Whitehall community, **you should not arrive at the school gates or join a queue more than 5 minutes before your child's start / finish time** (for example, if your child starts at 8:50am, do not arrive to the school before 8:45am).
- If your child or anyone in your household displays symptoms of Covid-19, your child **must not** come to school. Please see the flowchart further on in this newsletter for a reminder of the procedure.
- Please ensure you are adhering to the current guidelines at all times. As I am sure you are aware, our area has now moved into a High covid alert. For a summary of the restrictions now in place, please see the poster at the end of this newsletter.

Parent Meetings

Thank you to everyone who made time to have a telephone parent meeting with their child's class teacher.

I would also like to thank staff for the time and effort that goes into these parent meetings.

You should have received your child's learning log via email this week. If you have not received it, please email us and we will resend it after half term.

If you were not able to speak to your child's class teacher and would like to, please email us on office@mail.whitehallinf.org.



Birch new class teacher

Sadly, Miss O'Keeffe has decided to leave Whitehall Infant School for health reasons. I am sure you will join me in thanking Miss O'Keeffe for her enthusiasm and care for the children during her time in Birch Class and for settling the children at the start of their school journey.

We are extremely fortunate to have gained a very experienced Reception teacher, Ms Chohan, who will be our new Birch class teacher. Ms Chohan has settled well into our Whitehall family and has enjoyed getting to know the children during her first couple of weeks

Attendance

Thank you to everyone who ensures their child is in school at their designated time.



It is very important that your child arrives at school at the correct time. Late arrivals disrupt the classes and the other children's learning.

Attendance for this half term:

Nursery AM	90%
Nursery PM	89%
Birch	96%
Cedar	95%
Larch	95%
Spruce	91%

Whole School	95%
--------------	-----

Beech	92%
Elm	98%
Maple	97%
Pine	97%
Flamingo	93%
Kingfisher	97%
Toucan	97%

Are you an Attendance HERO?

Here
Every day
Ready
On Time



After school clubs

Remember that After school clubs start after half term (week commencing 2nd November).

For details of the After school clubs for your child's year group, the cost of the club and how to book, please visit: <https://www.whitehall-inf.hillingdon.sch.uk/parents/breakfast-afterschool>

Cold Weather plan

As we are approaching the winter months, we have recently updated our procedures for adverse weather conditions. Our updated procedures can be found on our website homepage - <https://www.whitehall-inf.hillingdon.sch.uk/>. Please have a read of these procedures so you are aware of what we will do in the event of adverse weather. As the weather is now colder, please remember to send your child to school with a jumper or cardigan, winter coat, and wellies (if needed).



Black History Month Activity

We recently sent you an activity for your child to complete to celebrate Black History month. Please email a photo of your child's work to office@mail.whitehallinf.org by **Monday 2nd November**. For a reminder of the activity, visit <https://www.whitehall-inf.hillingdon.sch.uk/>.



ADMISSIONS

Applying for Primary School

For children due to start Reception in September 2021, you must apply for a Primary School place by **15th January 2021**. Applications should be made online at <https://archive.hillingdon.gov.uk/primary>

Applying for Junior School

For children due to start Junior School in September 2021, you must apply for a Junior School place by **15th January 2021**. Applications should be made online at <https://archive.hillingdon.gov.uk/junior-school>

Transition and First Half Term Questionnaire

As a school, we value and welcome feedback from parents and carers. We have sent you a link to a survey about how you found your child's transition process and first half term experience. We hope you will be able to spare a few minutes to complete this survey. **Please complete it by Friday 6th November.**

The feedback we receive helps us to refine our transition processes. We will award prizes to the class with the highest number of completed surveys.



Walk to school month competition



Well done to all the children who submitted entries to this competition. These entries have now been sent to the London Borough of Hillingdon who will let us know who the winners soon. All children who sent in entries for this competition will be awarded with a certificate from us.

Lunch Menu

Week of 2nd November (Week 3 of menu)

MONDAY	TUESDAY	WEDNESDAY	THURSDAY	FRIDAY
Beef slice with New Potatoes	Lamb Lasagne with Herb & Garlic Bread	Roast Turkey with Roast Potatoes & Gravy	Chicken Sausages with Mash potato & Gravy	Fish Fingers with Chips
Salmon Paella	Jacket potato with baked beans & cheese	Vegetarian Pinwheel with Roast potatoes & Gravy	Vegetarian Sausages with Mash potato & Gravy	Chinese style stir fry with noodles
Macaroni Cheese	Lamb Lasagne with Herb & Garlic Bread (Halal)	Pasta Italienne	Chicken Sausages with Mash potato & Gravy (Halal)	Mixed Fresh Fruit Bag
Fresh Fruit	Mixed Fresh Fruit Bag	Jelly with fruit wedges	Fresh fruit	Fruit Yoghurt
Ice Cream	Fruit Yoghurt	Fruit Yoghurt	Berry sponge & custard	

Ideas for Half Term



Zoom LEGO® session

Wednesday 28 October

10am to 11am Free

Join us for our first-ever Hillingdon Libraries Zoom LEGO® session for 6 to 11-year-olds, we'll be building spooky Halloween models.

All you'll need is LEGO® bricks and imagination!

Booking details

- To book your child's place, email summerreadingchallenge@hillington.gov.uk with:
 - your name
 - name(s) and age(s) of your child(ren)
 - your library card or HillingdonFirst card number
 - your phone number




Go for an Autumn Walk

We are so fortunate to have some lovely green spaces near us. Why not go for an Autumn Walk and have fun completing the below checklist?

Visit <https://archive.hillingdon.gov.uk/localparks> for a list of parks and green spaces in Hillingdon.

There are larger parks in Buckinghamshire such as Black Park and Langley Park. Visit <https://countryparks.buckscc.gov.uk/> for more information.

Autumn Hunt Checklist

<input type="checkbox"/> conker		<input type="checkbox"/> fungi	
<input type="checkbox"/> chestnut		<input type="checkbox"/> bare tree	
<input type="checkbox"/> squirrel		<input type="checkbox"/> berries	
<input type="checkbox"/> brown leaf		<input type="checkbox"/> pine cone	
<input type="checkbox"/> orange leaf			
<input type="checkbox"/> yellow leaf			

What's
on...

Open Book Theatre &
London Ascel *present*

The Three Musketeers

celebrating Black History Season
Supported by Arts Council England

Experience Dumas' swashbuckling epic in this modern adaptation for the digital age. Featuring a cast of African/Caribbean heritage and contributions from young people across London

Online showing times by Hillingdon Libraries
Thursday 29 October, 2-3pm

Saturday 31 October, 2-3pm
Suitable for ages 6+

To book your place, please email
summerreadingchallenge@hillingdon.gov.uk
with the following details:

- Your name
- Names and ages of your child(ren)
- Your library card or Hillingdon First Card number
- Your phone number



HILLINGDON
LONDON

www.hillingdon.gov.uk/libraries

Ofsted **Parent View**

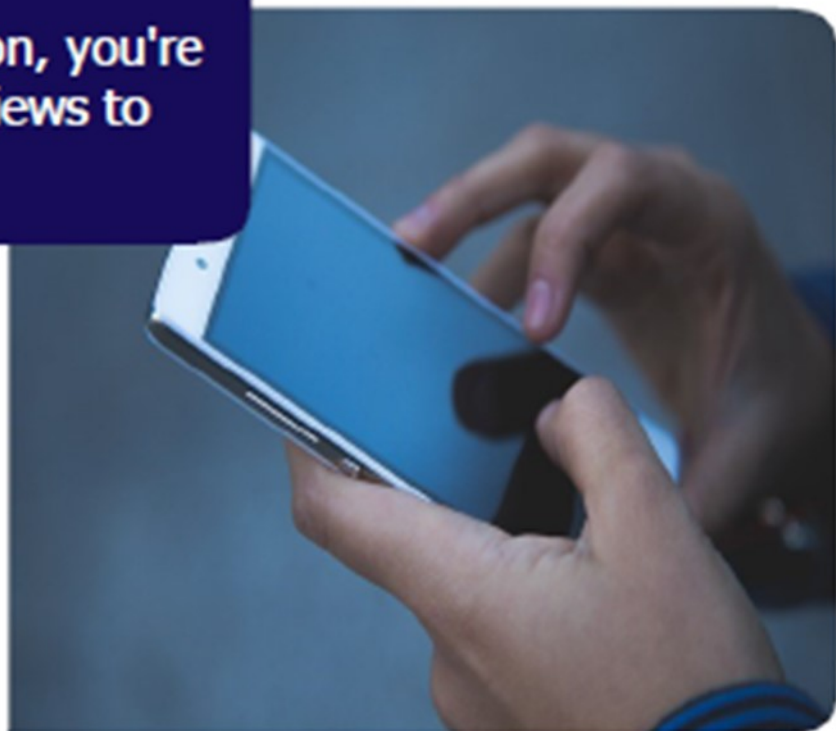
Are you a parent?

Have you heard of Ofsted Parent View?

Ofsted Parent View is an online questionnaire for you to give your views about your child's school.

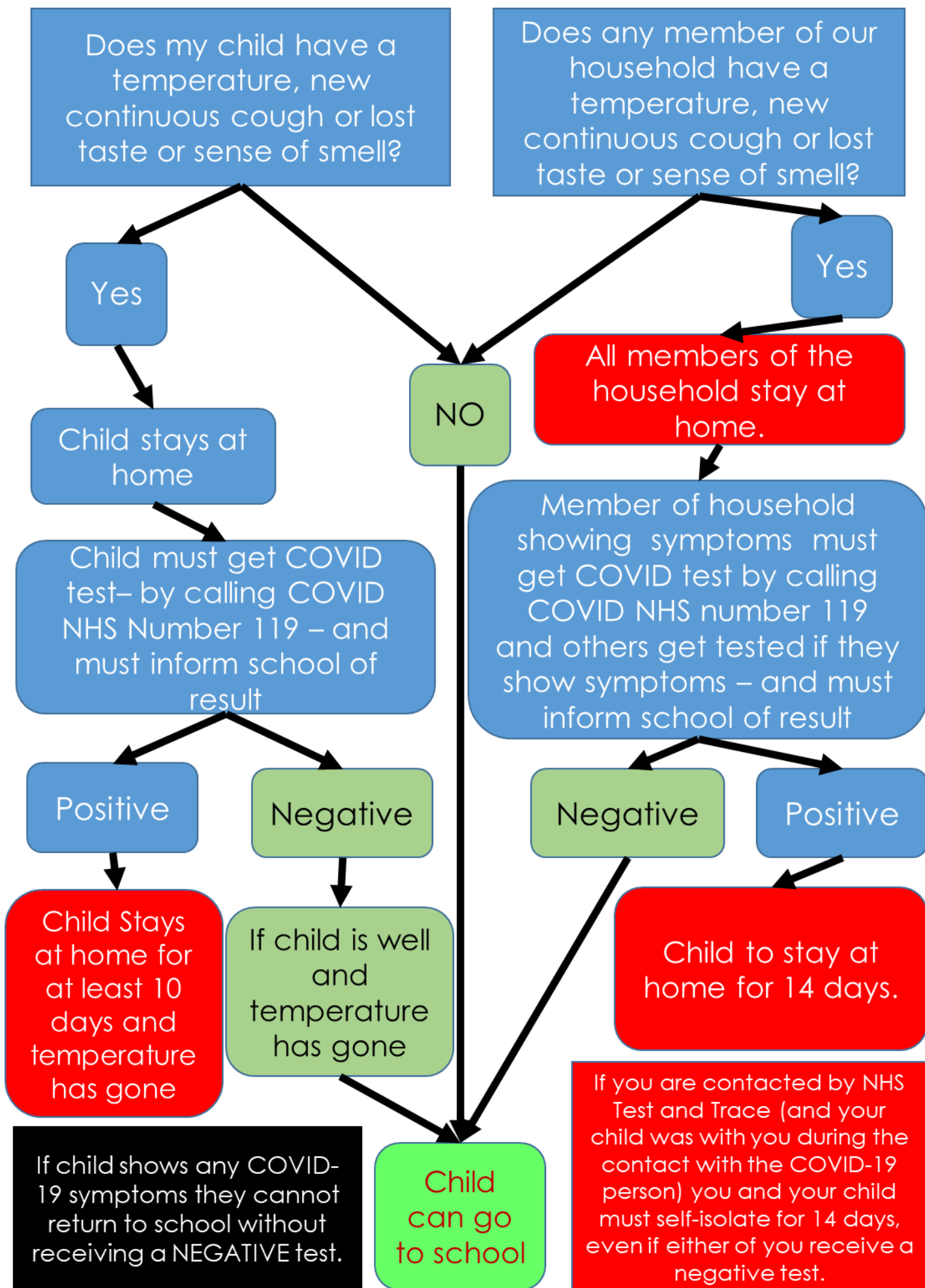
You can fill it in at any time of the year.

During an Ofsted inspection, you're also invited to give your views to inspectors using it.



<http://parentview.ofsted.gov.uk>

COVID SYMPTOMS AT HOME FLOW CHART



VERY HIGH

HIGH

MEDIUM



HM Government



LOCAL COVID ALERT LEVEL

HIGH**Social Contact**

1 household / bubble indoors. Rule of six outdoors.

Weddings and Funerals

Up to 15 guests for weddings and up to 30 guests for funerals. 15 for receptions, wakes and related ceremonies.

Overnight Stays

Overnight stays permitted subject to social contact rules.

Working from home guidance

Work from home where possible.

Shopping and Retail

Open.

Leisure and gyms

Open.

Hospitality

Open with some restrictions including 10pm closing time and table-service only.

Entertainment and tourist attractions

Open, except nightclubs and adult entertainment.

Education

Schools, FE colleges open. Universities must reflect wider restrictions.

Healthcare Services

Open.

Residential Care

Closed to external visitors other than in exceptional circumstances.

Travel and Transport

May continue to travel to open venues, but reduce number of journeys where possible. Avoid travel into Local COVID Alert Level Very High areas where possible.

Sporting Activity

Organised sport / licensed physical activity allowed in outdoor settings. Indoor organised sport must follow social contact rules (other than youth or disabled sport).

Worship

Open, subject to social contact rules.

Childcare

Registered and wraparound childcare. Supervised activities permitted in private homes. Children's groups permitted. Childcare bubbles for under 14s.

Youth Clubs and Activities

Permitted.

There are three simple actions we must all do to keep on protecting each other:

**Wash hands**

keep washing your hands regularly

**Cover face**

wear a face covering in enclosed spaces

**Make space**

stay at least 2 metres apart - or 1 metre with a face covering or other precautions

For more information and detailed guidance visit:
gov.uk/coronavirus